

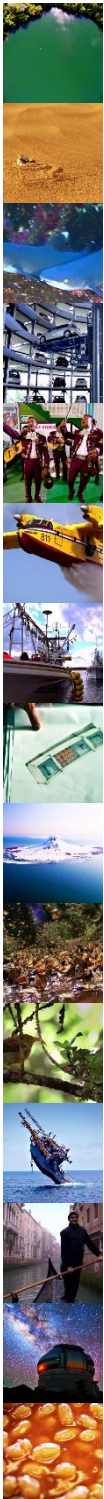
!! ANSWER SHEET !!

Explore the limits of outer space, plunge to the depths of the ocean and travel to the far-flung corners of our incredible world.

Watch the daily video, collect the fun facts and impress your family members!

SUMMER QUIZ FOR KS2 PUPILS

To watch these clips, you'll need to log in to your school's Discovery Education Espresso subscription.



Day 1 - The mysterious lake of the Amazon

Answer: 15 metres

Day 2 - Desert dwellers

Answer: latin word 'desertum' - meaning forsaken/abandoned

Day 3 - Sharks of the 'sea cathedral'

Answer: 4 metres

Day 4 - The Transparent Factory

Answer: 7 sq. kilometres

Day 5 - Mariachi music

Answer: Farm workers putting poems to music

Day 6 - Flying fire engine

Answer: 12 seconds

Day 7 - The tuna lottery

Answer: Honshu

Day 8 - The first mobile phone

Answer: 1972 (idea in 1972, produced in 1973)

Day 9 - Alaska's volcanoes

Answer: The Pacific Ring of Fire

Day 10 - Monarch butterflies

Answer: North America and Southern Canada

Day 11 - The Polynesian discovery of Hawaii

Answer: The Taro plant

Day 12 - Self-sinking ship

Answer: A baseball bat

Day 13 - Italy's icons

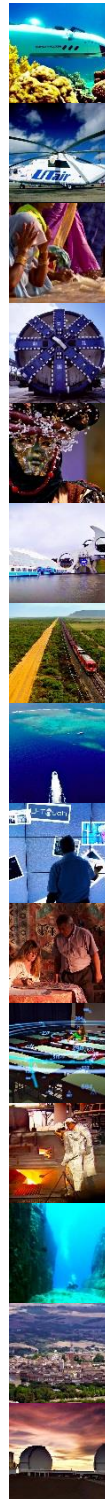
Answer: 3 years

Day 14 - The search for a second Earth

Answer: The Kepler Space Telescope

Day 15 - Baked bean mega factory

Answer: Haricot beans



Day 16 - Personal submersible

Answer: 5 centimetres

Day 17 - Flying truck

Answer: Plastic

Day 18 - India's sacred river

Answer: Ganga

Day 19 - Giant earthworm machine

Answer: Ring builder

Day 20 - Carnevale in Venice

Answer: End of February

Day 21 - A ferris wheel for boats

Answer: Two canals (at different heights/levels)

Day 22 - The four kilometre train

Answer: 342 wagons

Day 23 - Great Barrier Reef

Answer: Almost 1,600 different species

Day 24 - Engineering the touchscreen

Answer: Switzerland

Day 25 - Dagestan's traditional artform

Answer: 4 months

Day 26 - Flying taxi driver

Answer: Around 100 lift-offs per hour

Day 27 - How is steel made?

Answer: Iron (or Iron ore), coke and limestone

Day 28 - Japan's 10,000 year-old secret

Answer: The Pyramids and Machu Picchu

Day 29 - Siena - city of tradition

Answer: A (hand-painted) silk banner

Day 30 - Hawaii's telescopes

Answer: It's far from light pollution